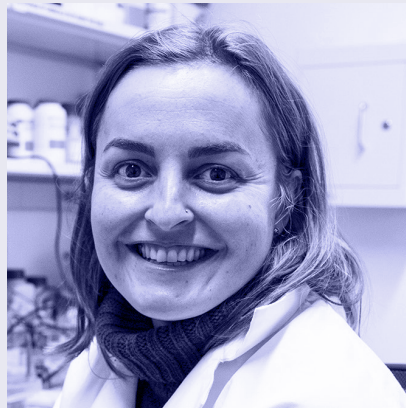


GETTING TO KNOW THE ORIGIN OF TUMOR ASSOCIATED MACROPHAGES

Thursday

**AUGUST 19
2021**

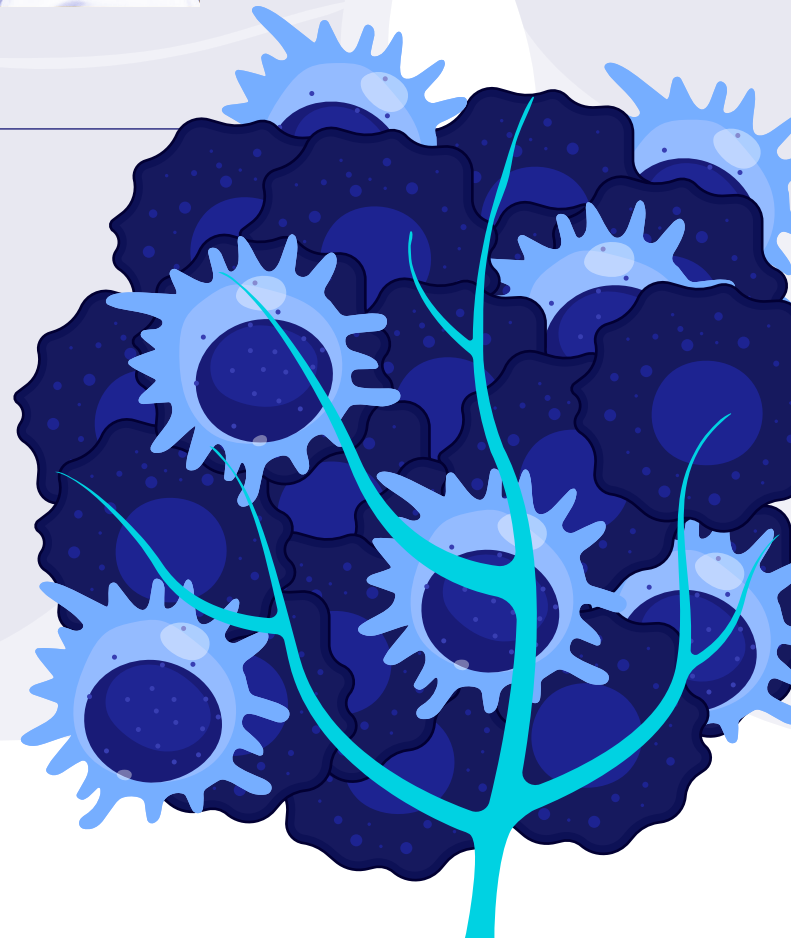
10 AM EDT (GMT -4)
4 PM CET (GMT+2)



María Casanova-Acebes, PhD
Head of Cancer Immunity Laboratory, CNIO.

KEY HIGHLIGHT

- Single-cell RNA sequencing of tumour-associated leukocytes reveals the contribution of tissue-resident macrophages to early non-small cell lung cancer (Casanova-Acebes et al., 2021)
- How to access and re-explore this single-cell dataset in BBrowser



REGISTER