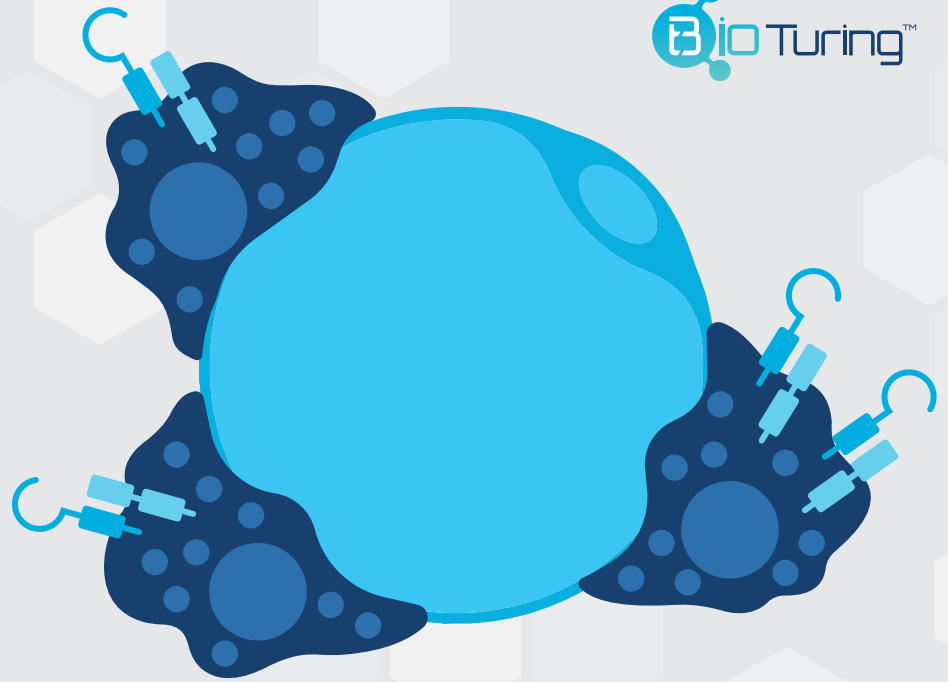


Wednesday
9:00 AM PT

Sep 10



EMBRACE THE FAT

TOWARDS THE DISCOVERY OF LIPID-ASSOCIATED MACROPHAGE (LAM) CELLS

- Jaitin, Adlung, Thaiss, Weiner, Li et al., Cell. 2019 -

SPEAKERS



Lorenz Adlung, PhD
Weizmann Institute of Science (Israel)

Dr. Lorenz Adlung is passionate about Systems Biology, combining powerful computational modeling with innovative experimental techniques. Thereby, he strives to unravel dynamic mechanisms in homeostasis and disease for the benefit of metabolic health and personalized medicine.



Jennifer Pham
Marketing Director at BioTuring

KEY HIGHLIGHTS

- Generating a single-cell atlas of adipose tissue immune cells in mice and humans
- Identification and characterization of Lipid-Associated Macrophage (LAM) Cells
- Establishment of a mechanistic link from LAM Cells to metabolic homeostasis
- How to access and reanalyze the single-cell dataset using BioTuring Single-cell Browser



Scan for registration or visit
<http://bit.ly/webinar-LAMs>